

Panel Matrix

Aquence® 866

Test	Description	Spec
Corrosion	Salt Spray 336 hrs 16 Cycles GM 9540P 10 Cycles Ford APGE	Various OEM GM 998-4132 Ford WSS-M2P190-A
Initial Adhesion	GM 9071P	GM 998-4132
Humidity Resistance	GM 4465P, 240 hrs	GM 998-4132
Impact Resistance	NES M 0007	Nissan NES M5083
Thermal Stability	LP-463PB-22-01, 15 Cycles	Chrysler PS-6061, MS-PB-60-2
Cure Test	LP-463PB-31-01, Method J	Chrysler PS-6061, MS-PB-60-2
Chip Resistance	SAE J400, 45 degree	Chrysler PS-6061, MS-PB-60-2
Fluid Resistance	FLTM BN 107-01, 113-01, 126-01	Ford WSS-M2P190-A
Abrasion	SAE J948, CS-10 Wheel, 500 g	Ford WSS-M2P190-A
Mar Resistance	SAE J365, 10 Cycles	Ford WSS-M2P190-A
Short Term Heat	ISO 105 A-02	Ford WSS-M2P190-A

Test Results

Aquence® 866

Various OEM Specification

Test Description	OEM ID	Requirement	OEM Spec	Substrate	ACC 866
Description: ACC 866 panels					
Thickness: 13 to 18 µm (0.5 to 0.7 mils) thickness					
Salt Spray	GM 4298P GM 9102P	336 hrs < 3mm total scribe, <10% rust	GM 998-4132	CRS	2.5 mm - Pass
Cyclic Corrosion	GM 9540P	16 cycles	GM 998-4132	CRS	3 mm - Pass
Cyclic Corrosion	FLTM BI-123-01	10 Cycles, Min. Rating of 6	Ford WSS-M2P-190-A	CRS	10 - Pass
Initial Adhesion	GM 9071P	99% min	GM 998-4132	CRS	100% Adh - Pass
Humidity Adhesion	GM 4465P GM 9071P	240 hr, 99% min	GM 998-4132	CRS	100% Adh - Pass
Impact Resistance	NES M 0007	30 cm. min	Nissan NES M5083	CRS	> 50 cm - Pass
Thermal Stability	LP-463PB-22-01	15 cycles, 99% min	Chrysler PS-6061, MS-PB-60-2	CRS	100% Adh - Pass
Cure Test	LP-463PB-31-01	Method J, 20 double rubs	Chrysler PS-6061, MS-PB-60-2	CRS	No Change - Pass
Chip Resistance	SAE J400	45 degree	Chrysler PS-6061, MS-PB-60-2	CRS	5B - Pass
Fluid Resistance	FLTM BN 107-01, 113-01, 126-01	Window Cleaner	Ford WSS-M2P-190-A	CRS	5 - Pass
		All Purpose Cleaner	Ford WSS-M2P-190-A	CRS	5 - Pass
		Water & Soap	Ford WSS-M2P-190-A	CRS	5 - Pass
		Grease	Ford WSS-M2P-190-A	CRS	5 - Pass
		Suntan Lotion	Ford WSS-M2P-190-A	CRS	1 - Pass
		Insect Repellent	Ford WSS-M2P-190-A	CRS	1 - Pass
Abrasion Resistance	SAE J948	CS-10 Wheel, 500g	Ford WSS-M2P-190-A	CRS	Pass
Mar Resistance	SAE J365	10 cycles	Ford WSS-M2P-190-A	CRS	No Wear - Pass
Short Term Heat	ISO 105 A-02	No cracks, blister or change in gloss	Ford WSS-M2P-190-A	CRS	Grade 0 - Pass

Aquence® Coatings

Aquence® 866

Panel testing, Corrosion – Salt Spray & GM 9540P



336 hr Salt Spray

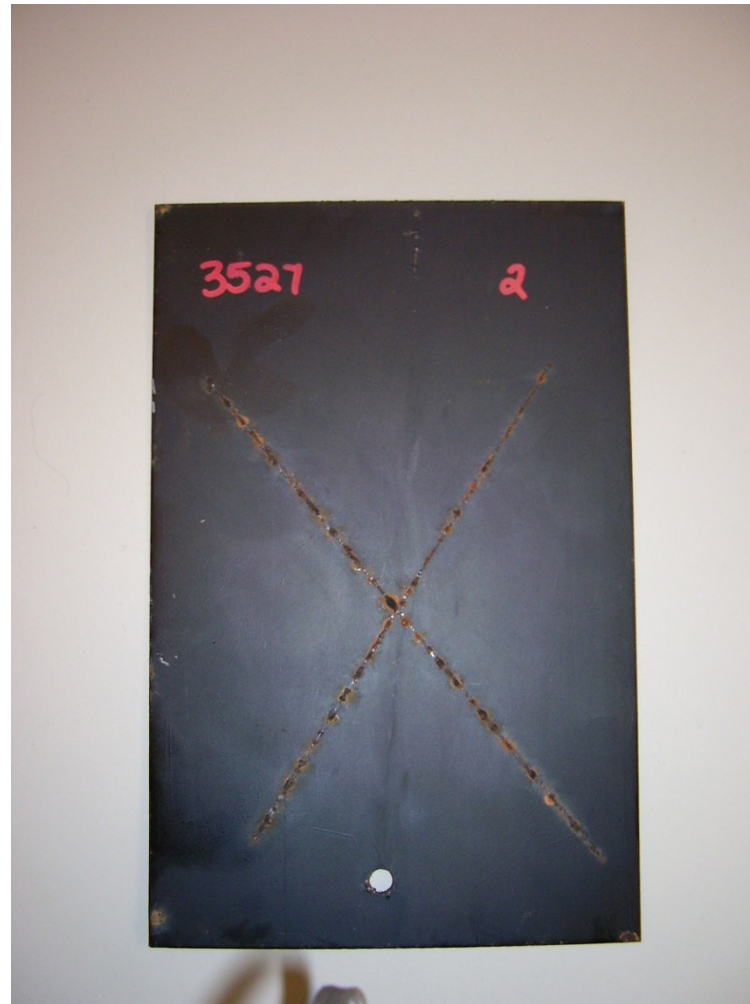


16 Cycles GM 9540P

Aquence® Coatings

Aquence® 866

Panel testing, Corrosion – APGE

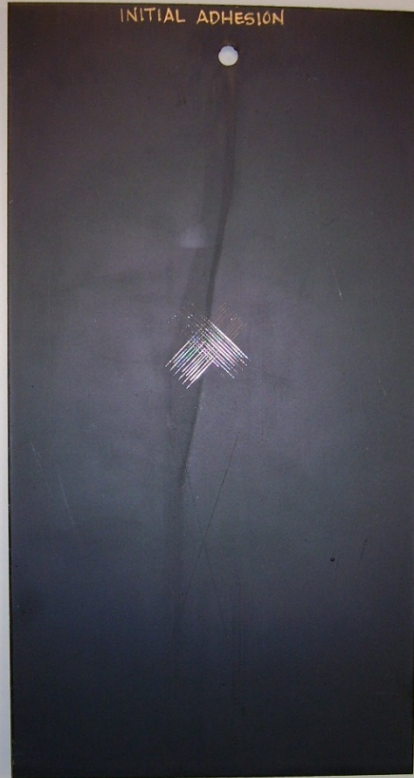


10 Cycles Ford APGE

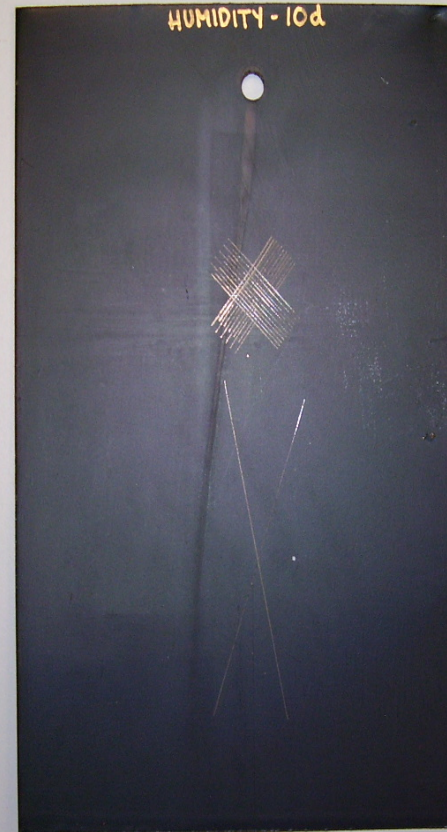
Aquence® Coatings

Aquence® 866

Panel testing, Initial and Humidity Adhesion



Initial Adhesion



240 hr Humidity Adhesion

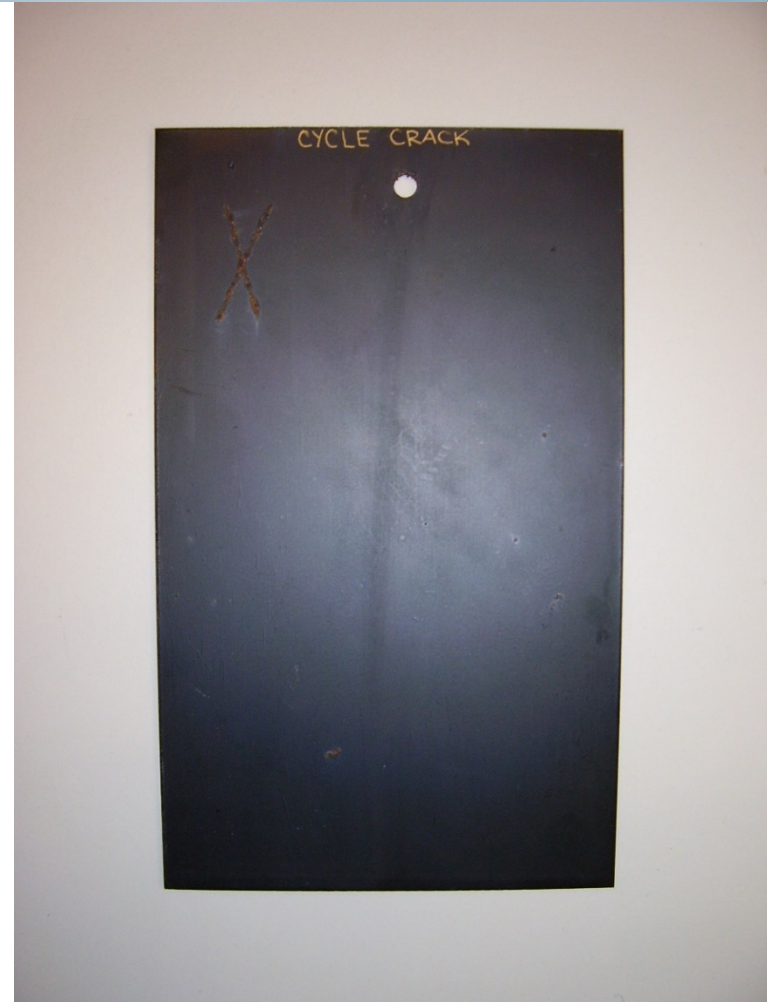
Aquence® Coatings

Aquence® 866

Panel testing, Impact & Thermal Stability



Impact Resistance



Thermal Stability-Cycle Crack

Aquence® Coatings

Aquence® 866

Panel testing, Cure and Chip Resistance



Cure Test

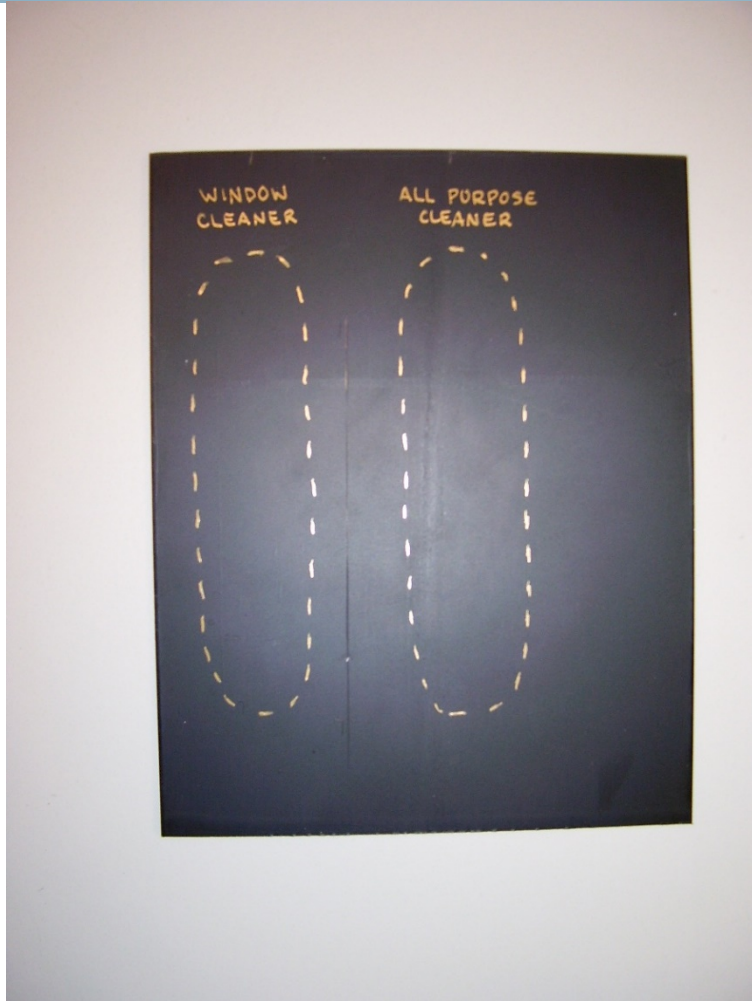


Chip Resistance

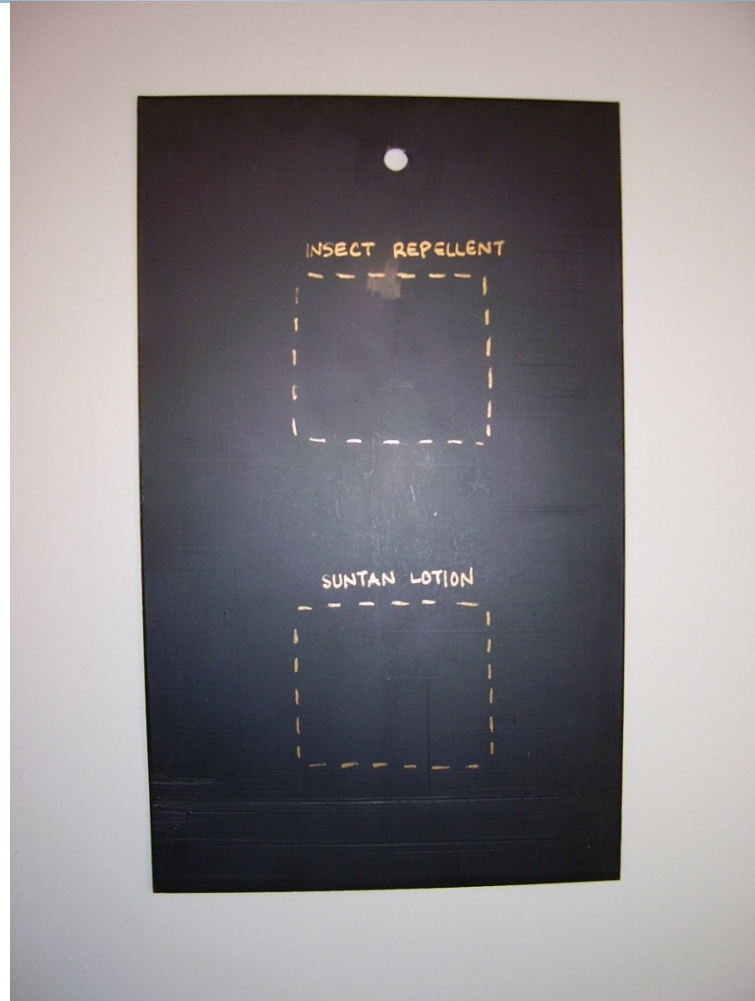
Aquence® Coatings

Aquence® 866

Panel testing, Fluid Resistance



Window & All Purpose Cleaner

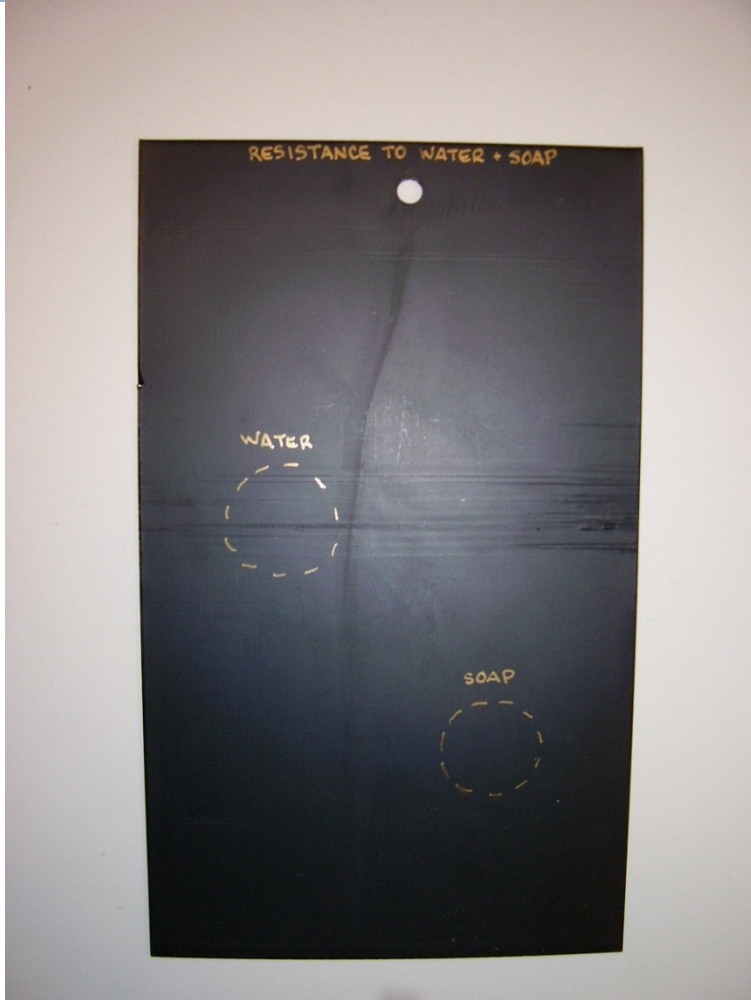


Insect Repellent & Suntan

Aquence® Coatings

Aquence® 866

Panel testing, Fluid Resistance



Water and Soap

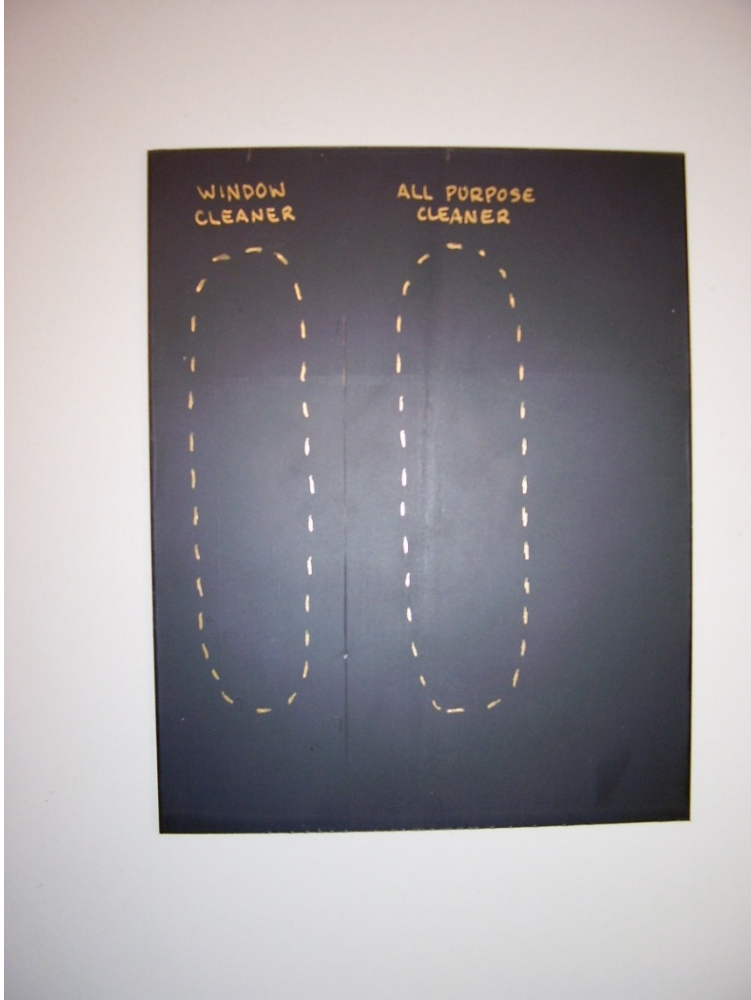


Grease Resistance

Aquence® Coatings

Aquence® 866

Panel testing, Fluid and Abrasion Resistance



Perspiration Resistance



Abrasion Resistance

Aquence® Coatings

Aquence® 866

Panel testing, Mar and Short Term Heat



Mar Resistance



Short Term Heat